

## Gili Air Island, Lombok, Indonesia Fundiving Gili Air

### The diving – best of 2 worlds!

By diving off Gili Air, you can experience anything from sites with beautiful topography and huge schools of fish, to amazing pinnacles with great current. Hang out in coral gardens with turtles around each corner or let yourself drift along long patches of reef in the stronger currents between the islands.

But don't get too carried away by the larger sites. It is WELL worth going on a treasure hunt on the sandy slopes of Lombok. Go combing the sand for tiny little juvenile boxfish bumbling confused around amongst proud sea horses and breeding anemone fish.

If the hype of muck diving gets to you, try the ultimate macro dive in the Lombok ferry harbor. The visibility is nothing to brag about, but the creatures you find on this dive are rare and incredible strange and cool! Like Ghost Pipefish, ask to see one, they are nothing less than amazing.

The distance between the dive center and the dive sites is very short. You will have plenty of time to relax on land between all dives.

Ps. Dolphins are randomly spotted from the boat. From time to time Manta rays and the Oceanic Sunfish shows on dives. Keep your eyes open for a cool encounter!



**Area name / Island name**  
Gili Air Island, Lombok Indonesia

**Nearest airport**  
Lombok & Bali

**Season**  
All year round  
The best season is June to October but the Gili islands offer great visibility and climate all year

**Center type**  
SSI Diamond Instructor Training Facility

**Experience level**  
SSI Open water diver or equivalent.  
Perfect not only for the novice diver, but has excellent dive sites and marine life for the experienced diver as well

**Minimum age for participation**  
10 Years

## Gili Air Island, Lombok, Indonesia Fundiving Gili Air

### Location

Above water Gili Air differs quite a lot Gili Trawangan. Over the past years, Gili Air has become more popular with those wanting to escape the party atmosphere and buzz associated with Gili Trawangan. The island is tiny, but very relaxed and pretty. Like on Gili Trawangan, you will find no real roads here. Only sandy paths where the only type of transportation is horse carts and bicycles. You can find all types of restaurants and bars, but all with a really chilled atmosphere. When you are tired of hanging out in your hammock on the beach (which is what you do here) go searching for the secret little places in the back streets where the local food is cooked to perfection for cheap cheap bucks!

### Your resort

Is copying the concept from our dive center on Gili Trawangan. There's a pool to cool down in, a lovely restaurant (breakfast is included) and an awesome hang-out area with hammocks. The beach is less than 10 meters away (or the water is, the resort is actually on the beach) and has a breathtaking view over Mount Rinjani and Lombok. Pure uhhmness!

### Your Room

In season, our little resort gets very booked out, and we can't guarantee you a bungalow. But all rooms are very clean, cozy and with a little private terrace. Room facilities include twin or double bed, Air Con, hot water and safety deposit.



Gili Air Island, Lombok, Indonesia  
**Fundiving Gili Air**

This is only a selection of the many dive sites represented on this destination. No dive sites can be guaranteed since diving is dictated by the environment.

### **Shark Point**

This is always a very popular dive site! Shark point is a vast open dive site situated on the west side of Gili Trawangan. When the currents are running, the site is great for more experienced divers! The site starts on a sloping reef, with a series of 3 ridges and valleys at 3 different depths, running parallel to the shore, leading into the deeper water and the actual "Shark Point", an area which truly deserves its name. Expect white and black tip reef sharks as well as schooling jacks. If you're lucky you might get a glimpse of the barracuda schools patrolling near the reef.

### **Manta Point**

Situated on the south tip of Gili Trawangan, this site is a gentle slope starting at about 5 m and ending at about 22 m. As there is rarely very much current, this is a favorite site for beginners. A large portion of the reef is marked by giant steps of table coral, which shelter the fish. You will see some isolated bommies of hard corals and some soft corals. You can spot sweetlips, groupers and snappers, angelfish and varieties of parrotfish. The site ends in a sandy bottom where it is the norm to find white tip and black tip reef sharks, rays, turtles and during the rainy season when the water is rich with plankton you have the chance of seeing passing mantas.

### **The Bays of Lombok**

Just next to Gili Air you find the island of Lombok. Many people don't regard the island as a place of diving, but once you get under the surface it becomes a true paradise for muck diving (macro). The bays of Lombok rarely face any notable currents. They are easy dive sites with gentle sandy slopes starting at 5m and continue to 18m. At first, the dive site seems completely desolate but once you get your face close the sand it's full of life. On almost every dive you have several seahorses, ghost pipefish in couples, juvenile boxfishes that look like fat blue bumblebees as well as an abundance of nesting anemone fish. No matter where you turn your face you find something new, strange and thrilling; it turns into a true treasure hunt that always seems to finish all too soon before you have to do your safety stop.



#### **Conditions:**

##### **Visibility**

10m - 40m

##### **Water Temperature**

23 - 29 degrees

##### **Current**

Mild to strong currents, sheltered bays with no current.

##### **Depths**

5m - 40m  
Average is 18m

##### **Special marine life**

Dolphins, Manta rays and Mola Mola on random sightings



Gili Air Island, Lombok, Indonesia  
**Fundiving Gili Air**

**Itinerary**

On the day of arrival, the equipment will be fitted and packed for the following days of diving; the rest of the day is left for exploring on land and settling in. The full days on resort consist of diving until afternoon on the local and offshore sites, all dives are dived from boat. Between the three daily dives, the boat will return to the dive center. The dive sites vary from day to day, depending on wind and weather. Please check with the dive center what dives will be done the day before they are conducted. There will be no refund on dives not used. Check out at noon.

**DIVE PACKAGE 1:** 3 days 2 nights - 4 dives

Fundiving Gili Air The short option with 4 dives spread out on 2 days of diving, 1 day of arrival and 2 nights of accommodation, the dive sites will vary depending on weather and experience level.

**DIVE PACKAGE 2:** 6 days and 5 nights - 10 dives

Fundiving Gili Air Extended The longer option with 10 dives spread out on 5 days of diving, one day of arrival and 5 nights of accommodation, the dive sites will vary depending on weather and experience level.

**If you want a longer itinerary, you can add extra days of diving and accommodation upon booking.**

**Please note**

Due to ocean and weather conditions, the itinerary can be subject to change.



**Activity starts**

Every day

Please note that start times can vary from trip to trip if any changes, you will be notified upon arrival.

**Activity starts from**

Dive center

Please contact your dive center latest one week prior arrival to confirm your arrival time and pick-up (when included)

**Group Size**

No limit

Max. 4 divers pr. Divemaster

**Language**

English

Gili Air Island, Lombok, Indonesia  
**Fundiving Gili Air**

**Transfer information**

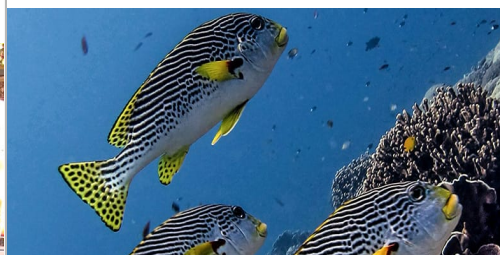
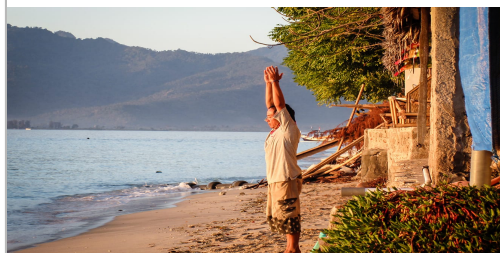
**Flights** - There are daily flights from Denpasar, Bali to Mataram on Lombok with several airlines. Flights run every hour from 7:00 am to 6:00 pm and flight time is approximately 25 minutes.  
At arrival in Mataram airport, take a taxi/transport to Bangsal Harbour where public boat sails across to the island of Gili Air.

alternatively, a pick up can be arranged by the dive center in the airport. Whichever you choose, the trip from the airport to the dive center on Gili Air is a 1.5 - 2 hour car journey and a 15 minute speedboat transfer to the island.

**Boats** are leaving in the mornings from two different departure points in Bali and arrive in Gili Trawangan between 10:30 and 02:30. The pick-up from your hotel to the harbour is not included in the price. The recommended fastboat service is the Bluewater Express. They depart from both Padang Bai (East Bali) and Serangan (South Bali) and run a super-professional service. Tickets can be booked online

You can make your way to Gili Air on your own using local travel agents, or the dive center can guide and arrange all your transfers for you.

**You need to let the dive center know your arrival at least one week in advance. You will find the details for the dive center on your voucher.**



Gili Air Island, Lombok, Indonesia  
**Fundiving Gili Air**

Prices below are based on 2 persons sharing accommodation, unless stated otherwise.

### FUNDIVING EXTENDED

Days / Nights	6/5
Amount of dives	10
Price (incl. accommodation)	625 EUR

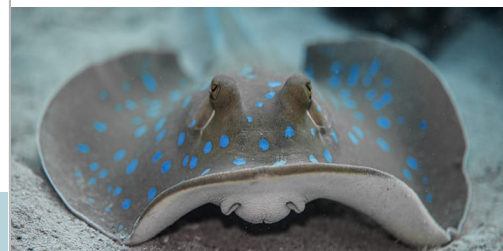
### Supplements

Extra day of diving (2 dives)	80 EUR
Extra night of accom. (after)	40 EUR
Extra night of accom. (before)	40 EUR
Refresher Dive (added to 1st dive)	73 EUR

Prices for supplementary accommodation are based on 2 persons sharing accommodation, unless stated otherwise.

### Supplements

A supplement can be chosen to add on your package. All supplements can also be booked on site. In high season, bungalows and boats get filled fast - you might find trouble getting an extra night in your resort or an extra day of diving. If you are booking a course, it is recommended to book an extra night of accommodation prior your course, to get settled and get up front on the studying.



### Included

Accommodation  
Continental breakfast  
Two dives per day  
Equipment  
Guiding

### Not included

Dinner Lunch  
Transfer to and from Gili Air  
Marine park fee - IDR 150.000 per diver

### Also available on site

Extra diving  
Extra accommodation  
Upgrade of room  
Nitrox

### Continuing education

Courses are available on request for all levels of continuing education.

### Cancellation

Please refer to FAQ & Terms on [www.blueventure.net](http://www.blueventure.net)

### Dive insurance

Basic dive travel insurance required

## General terms and conditions

### GENERAL CONDITIONS

#### CHANGES OF BOOKINGS:

You can change your booking request or start date free of charge.

If you need to change your booking you must contact the **dive center** directly by e-mail or phone. You will find the contact details on your voucher. For verification purpose, please remember to mention your name and booking ID.

If you want to change your start date, we recommend that you do so minimum 10 days before the beginning of your dive package. Later than this, might cause the accommodation to be fully booked for alternative dates. During high seasons, 10 days might not be sufficient time, please allow extra time for changes in the high season. As a reminder, you will receive an email with general information and contact information of your dive center 10 days prior to your start date.

#### CANCELLATION RULES:

Any customer has the right to cancel their booking with Blue Venture Diving. In order to do so, you must contact your selling agent. The cancellation fees and rules of your selling agent will apply for your cancellation.

Blue Venture is not liable for any cancellations done by the customer of personal reason such as/or in the same category as sickness, family, missed flights etc, or other circumstances that is beyond reasonable control such as force majeure.

#### Blue Venture booking cancellation

In the unlikely event that Blue Venture is forced to cancel a booking, the customer will get direct notice. A cancellation will only happen if Blue Venture finds that the contracted dive center can't perform the needed service of the booked package or if the dive standards can't be fulfilled accordingly. Minor changes in the itinerary will not be defined as a valid cancellation reason, as diving is dictated by the environment and the people enrolled in the activity.

Blue Venture will always do their best to find another operator of same or higher standard, but it is up to the customer to decide whether they want to accept the change or get a refund.

#### INSURANCE:

A cancellation insurance is not included. It is highly advised recommended that you obtain adequate travel insurance prior to your departure from your home country.

#### REFUNDS:

##### Medical Statement

To enroll in an Open Water Course, all students **MUST** fill in the Medical Statement. Please ensure that you have received the medical statement from your travel agent. If any questions are replied with a "Yes", the medical statement must be signed by a doctor. Failing the medical statement at the destination, and therefore not being able to enroll in the diving course, you will not be entitled to a refund.

**If you have not received your Medical Statement, please make sure to print it from this link.**

<https://blueventure.net/files/information/12.pdf>

#### Restricted dives

Diving is dictated by the environment and the people enrolled in the activity. All diving is performance based. It is up to the discretion of the dive guide/instructor to restrict divers from entering activities that goes beyond their experience level. All guides strive to reach the expectations of the customers. However, if they find that the safety of the group or an individual is jeopardized or at risk by one or several individuals, it is up to the dive guide/instructor to restrict any divers from entering the water.

In this event the dive center or Blue Venture is not obliged to give a refund.

#### Dives not completed

There is no refund for dives not carried out.

Refund for dives not done for any reason is up to the discretion of the dive center. Most dive centers do not give refunds for dives not done with personal causes such as seasickness, low on air situations or a failure in mastering the equipment etc. All log books will be checked prior to the dive and the dive sites will be chosen accordingly to the experience level. It is however expected that certified divers keep within their limits and do not cross their comfort zone. Blue Venture and your travel agent is never responsible to pay a refund for dives not done.

#### Courses not completed

There is no refund for courses not completed! All courses are performance based, but it is up to the instructor to pass the student. If a customer can not complete a course with success they will receive their course documents for an optional referral, but the contracted dive center, your travel agent and Blue Venture is not responsible to pay a refund.

**Boats or dives not departing**

If boats or dives are cancelled due to bad weather or sea conditions, it is up to the dive center to re-schedule and compensate with a similar dive trip when conditions allow. If the customer does not have adequate time to enroll in another trip/course it is up to the customer to make sure the dive center notify Blue Venture of this in order to secure a refund via the sales agent who completed the sale with the customer. There will only be refund on the diving and not the accommodation.

**ACCOMMODATION:**

Unless mentioned in the destination information folder the accommodation is always part of the package.

If the dive center by any means can't deliver the agreed accommodation, it is up to their discretion to supply immediate accommodation of the same or higher standard. (the destination information folder is found on the Blue Venture website.)

If the accommodation somehow does not live up to satisfactory standards of the customer, the customer must contact Blue Venture by phone or email as soon as possible (preferably while still on site) in order to solve the problem.

**DIVE INSTRUCTORS & DIVE GUIDES:**

All contracted dive centers has been handpicked based on their level of professionalism and expertise. Blue Venture ensures that all guides and instructors have the correct education and experience. In the unlikely event that a customer suffers a bad experience with any guide, instructor or dive center facilities, Blue Venture is entitled to know, but can't by any means be held liable.

At the end of you dive experience as questionnaire will be sent out to you, that we would like you to answer. By doing this, you help securing a high level of professionalism towards all customers.

**MEDICAL STATEMENT & LOGBOOK:**

If you are about to enroll in a dive course (entry level only), you must fill out the RSTC Medical Statement before you leave your home country. Please make sure your agent has provided you with the RSTC Medical Statement. You can also print the medical statement from the link, further up on this page. If you need the medical statement reviewed by a doctor, you have 10 days from the date of the booking with the option of cancelling for free.

If you are already certified as a diver and about to go fundiving, you must remember your current dive certificate and your personal logbook or dive computer.